

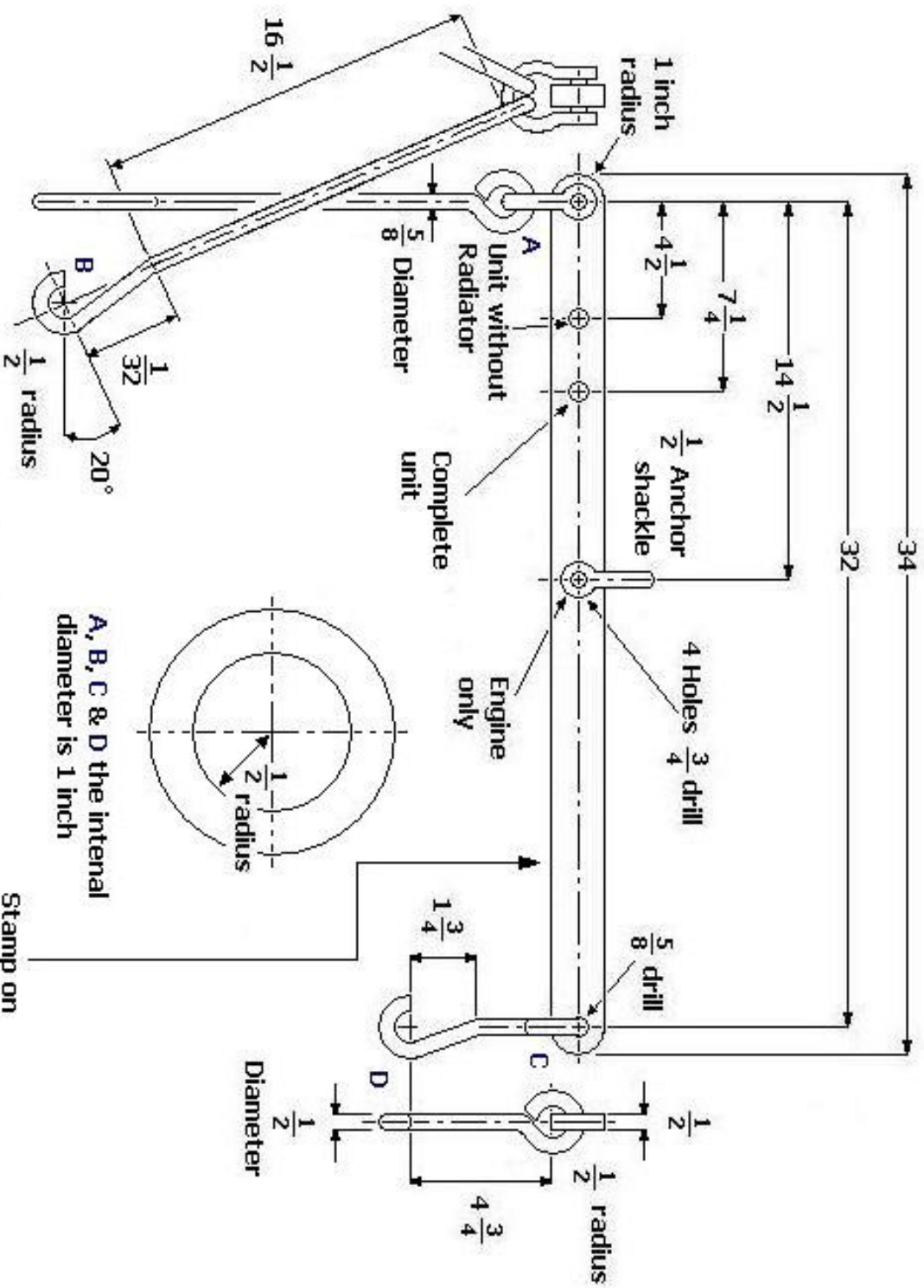
## Engine and transmission Lifting frame

The picture below shows all the positions that could be used to remove a B60 Engine and Transmission from a Ferret Scout Car. The home mechanic will more than likely not have a big enough engine lifter to remove both the Engine and the Gearbox. A two tonne Engine Lifter is just about usable to remove an engine when it's at one tonne position.

To clarify use the position 'Engine Only' to remove the B60

[www.ferret-fv701.co.uk](http://www.ferret-fv701.co.uk)

© ACF



Stamp on  
Lifting fixture for Ferret MK 1 & MK 2 Engine and Transmission  
Safe Load 2000 LBS